

SOUDAFIX APPLICATION GUIDE

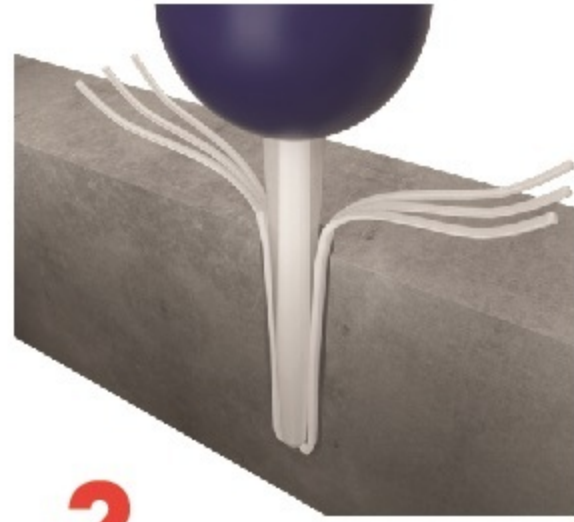
To guarantee the full tensile and shear strength of the Soudafix products, it is extremely important that the installation is carried out correctly. Skipping or careless execution of one of the steps can reduce the anchoring strength by a factor of ten.

SOLID BRICKS & CONCRETE



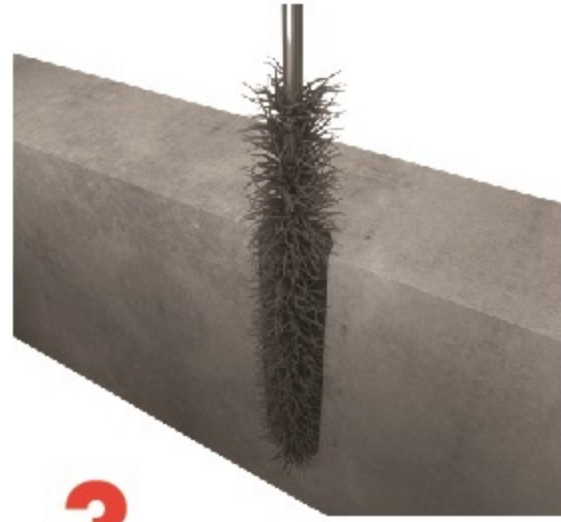
1.

Drill the hole to proper depth and diameter per specifications using a rotary hammer drill with a stop drill bit.



2.

Clean the hole using a blow-out bulb, pump or compressed air (4x).



3.

Clean the hole using a wire brush (4x).



4.

Clean the hole using a blow-out bulb, pump or compressed air (4x).



5.

Apply the Soudafix chemical anchor resin into the drill hole, ensuring the resin is mixing properly before application.



6.

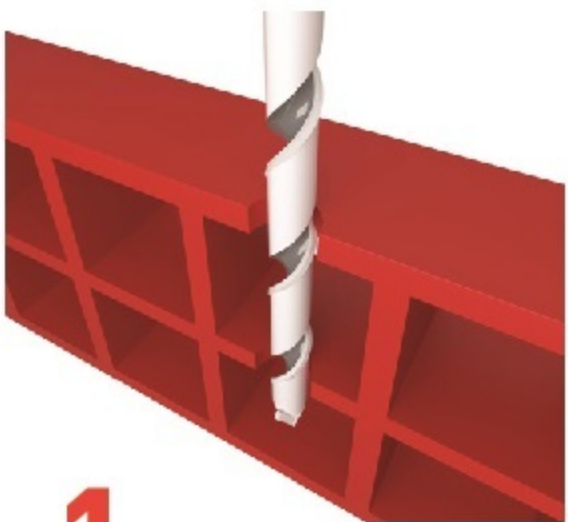
Push and turn the treaded rod or rebar into the hole containing the Soudafix chemical anchor resin.



7.

Fix the nut onto the tread, but only after full curing.

HOLLOW BRICKS



1.

Drill the hole to proper depth and diameter per specifications using a rotary hammer drill with a stop drill bit.



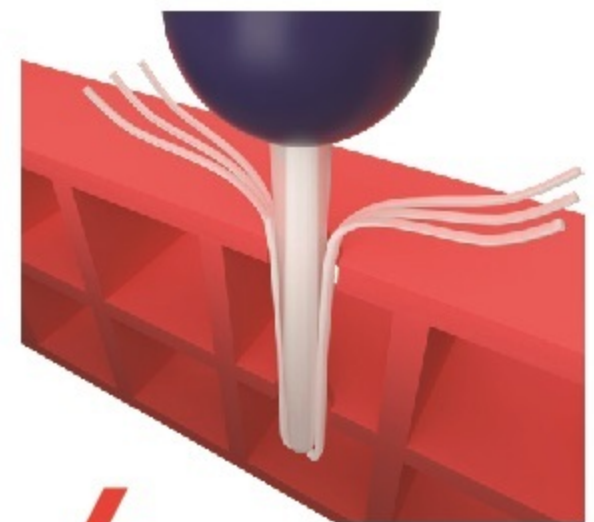
2.

Clean the hole using a blow-out bulb, pump or compressed air (4x).



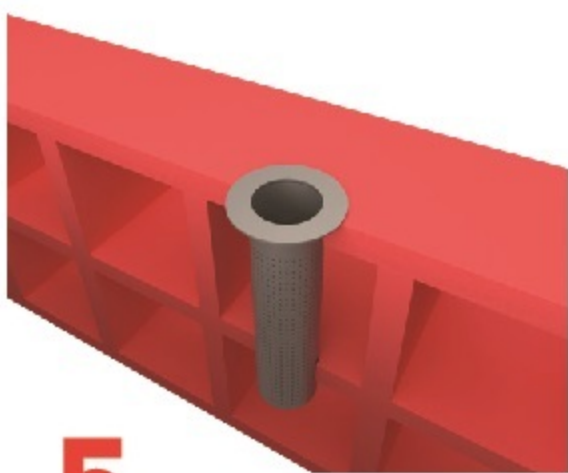
3.

Clean the hole using a wire brush (4x).



4.

Clean the hole using a blow-out bulb, pump or compressed air (4x).



5.

Insert Anchor Sleeve into the hole.



6.

Apply the Soudafix chemical anchor resin into the sleeve in the drill hole, ensuring the resin is mixing properly before application.



7.

Push and turn the threaded rod into the hole containing the Soudafix chemical anchor resin.



8.

Fix the nut onto the tread, but only after full curing.