

# Small Piece Holder Instructions



Congratulations on the purchase of your new Small Piece Holder! It securely holds small stock for safe routing with a bearing-guided bit on a router table. Please read the instructions fully before using.

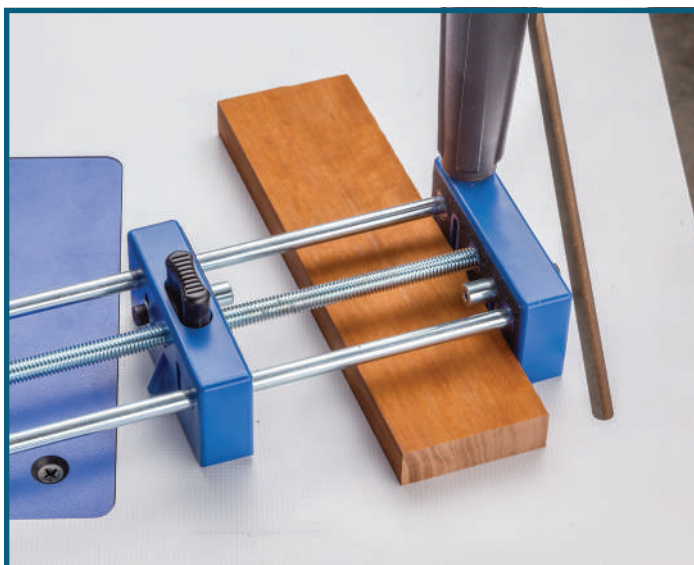
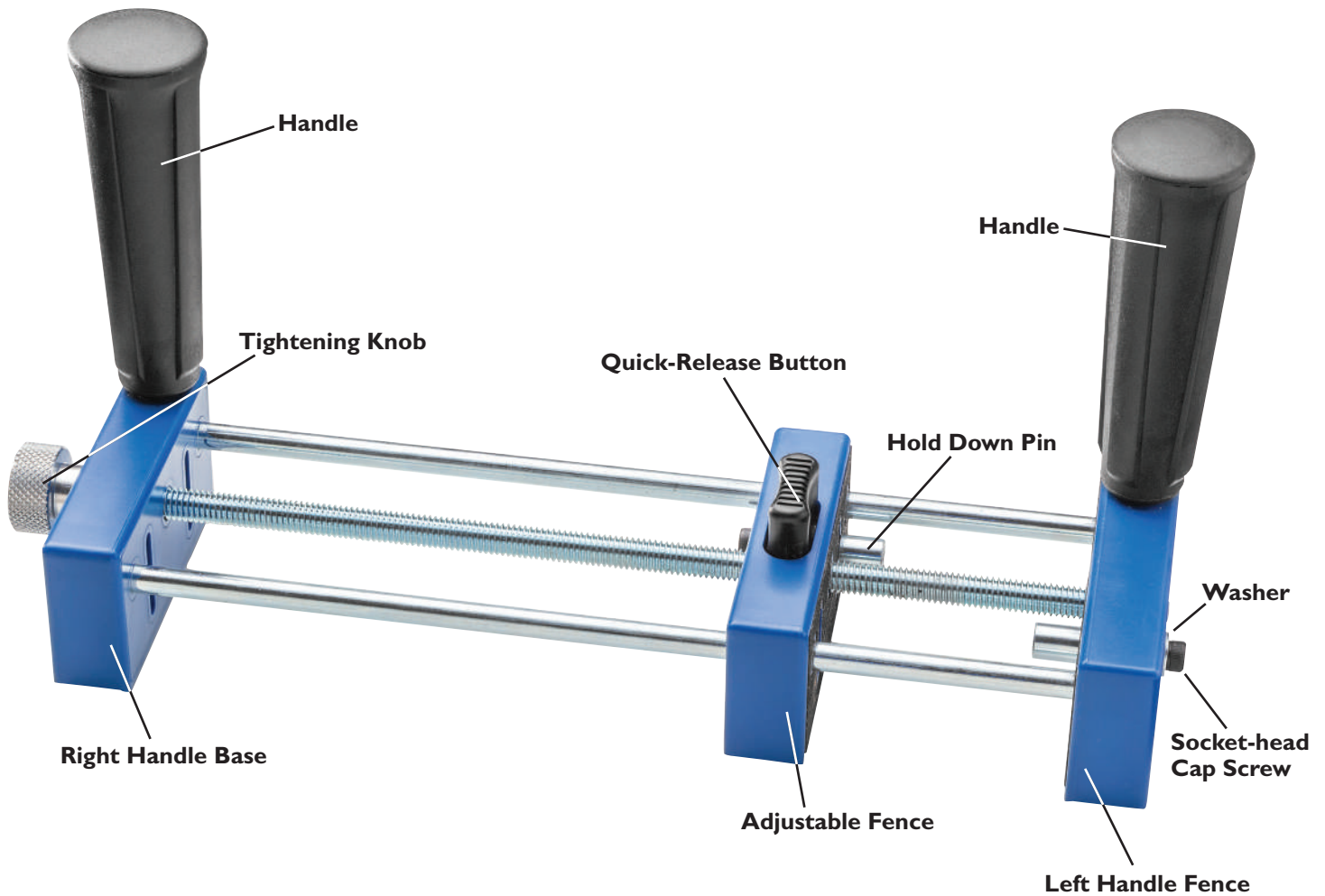


Fig. 1

## Assembly

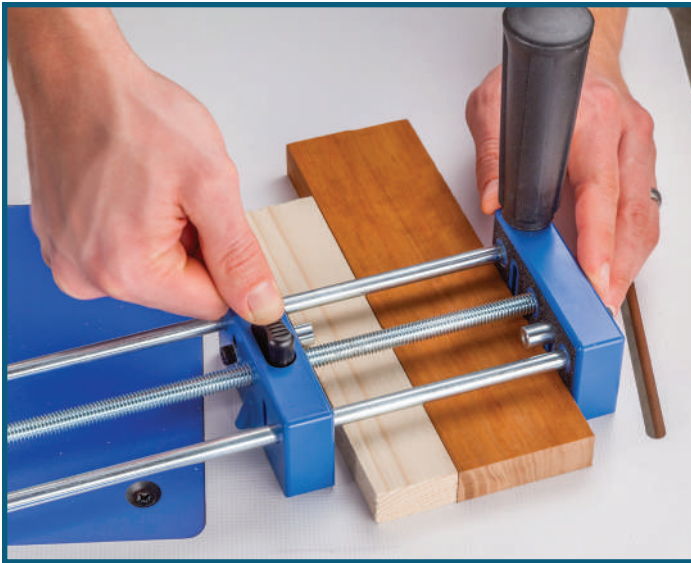
1. Screw the Handles into the Left Handle Fence and the Right Handle Base.
2. Install the two Hold-Down Pins diagonally across from each other – one in the Adjustable Fence and the other in the Left Handle Fence. For each, place a washer on the socket-head cap screw; insert the screw in the slot; then thread the pin body onto the socket-head cap screw. Slide the pins toward the top of their respective slots and hand-tighten.

## Use

**Note:** The Rockler Small Piece Holder is designed for use only on a router table and only with bearing-guided router bits.

1. Place your workpiece and the Rockler Small Piece Holder on your router table or another flat surface.





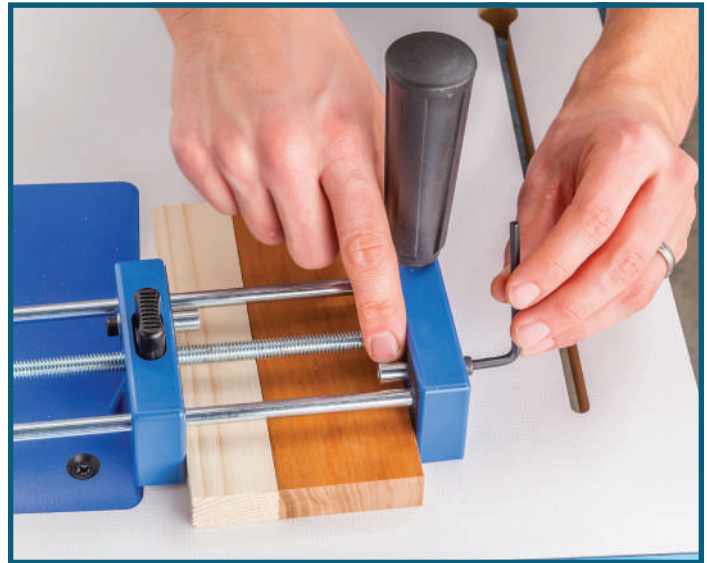
**Fig. 2**

2. Place workpiece between the Left Hand Fence and the Adjustable Fence. Workpiece must be placed against the abrasive face of the Left Handle Fence, with the piece extending beyond the front of the jig, far enough that the router bit won't contact the fence (at least half the diameter of the router bit). **Fig 1.**

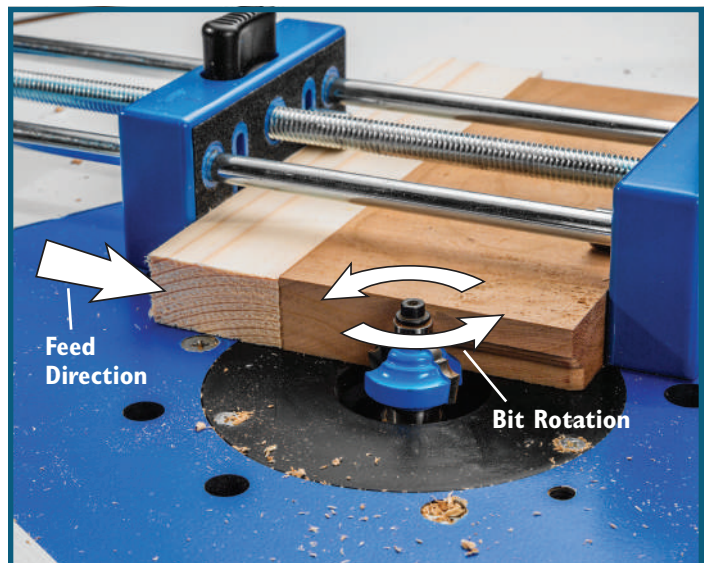
**Note:** To prevent blowout, a sacrificial block can be sandwiched between your stock and the Adjustable Fence or attached to the fence with panhead screws through the slots.

3. Use the quick-release feature to move the Adjustable Fence up to the workpiece, making sure your stock is flat to the surface. **Fig. 2.**
4. Loosen the Hold Down Pins and lower them until they're snug against the top of your workpiece. Use the included hex wrench to tighten them in place. **Fig. 3.**
5. Fully tighten the Adjustable Fence against your stock by turning the Tightening Knob on the threaded rod counter-clockwise. Check to be sure your stock is secure in the Small Piece Holder and flat to the table.
6. Rout the profile on your workpiece by gripping the handles and feeding the stock into the router bit in a direction opposite the bit's rotation. Be sure to keep the workpiece flat to the table and in contact with the bit's guide bearing. **Fig. 4.**
7. If you need to rout thicker stock, a wooden outrigger block can be attached to the Right Handle Base to provide additional stability. **Fig. 5.**

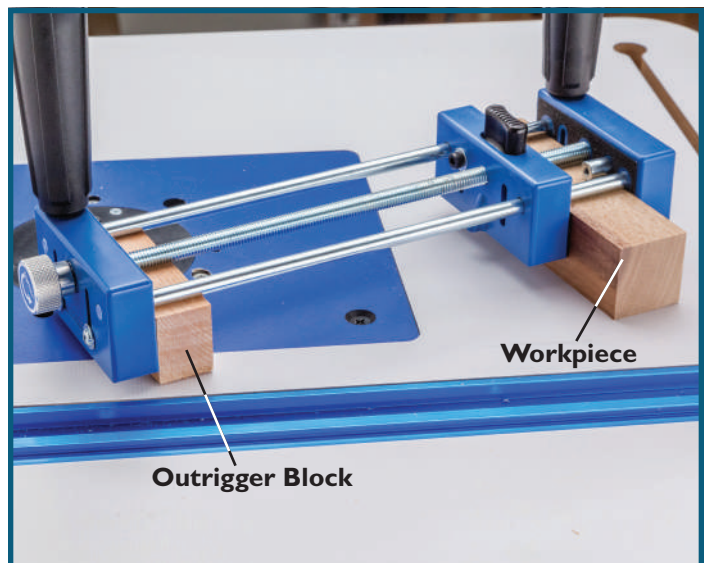
Check Rockler.com for updates. If you have further questions, please contact our Technical Support Department at 1-800-260-9663 or support@rockler.com



**Fig. 3**



**Fig. 4**



**Fig. 5**

## Important Safety Guidelines

1. This tool is designed for specific applications only and should not be modified and/or used for any application other than for which it was designed.
2. Before using the Rockler Small Piece Holder read, understand and follow all instructions and safety information provided.
3. Always read, understand and follow all safety information and instructions of any tool that is used in conjunction with this tool.
4. Before using this tool your power tool MUST be in working order as defined in that tool's owner's manual.
5. If after reading all instructions you still do not feel confident using this tool do not attempt to use it.
6. Always wear safety glasses, hearing protection, and follow all standard shop safety practices.
7. Do not use this tool if you are in anyway impaired by medications, alcohol, drugs or fatigue.
8. Remove all jewelry, secure loose clothing and tie up long hair before using this tool
9. It is the sole responsibility of the purchaser of this tool to ensure that any third party reads and agrees to all the safety precautions outlined in this manual prior to using the tool.
10. Maintain these instructions and warnings as long as you own the tool. Keep in a place where they will be readily available for reference.
11. The Rockler Small Piece Holder is intended for use on a router table.
12. At no time during the cut should any part of the Small Piece Holder other than the sacrificial wood piece and the material being cut make contact with the bit.
13. Your router mounting plate must be level in the table before making a cut.
14. Tighten all knobs on the Rockler Small Piece Holder before making the cut, securing the piece to be cut in the jig.
15. Keep your hands on the provided handles, behind the jig at all times while operating.
16. Only clamp material between abrasive faced components.
17. The Small piece holder is only intended to be used with square stock. Do not attempt to secure round or other shapes in the tool.
18. Maintain awareness of the router bit at all times.