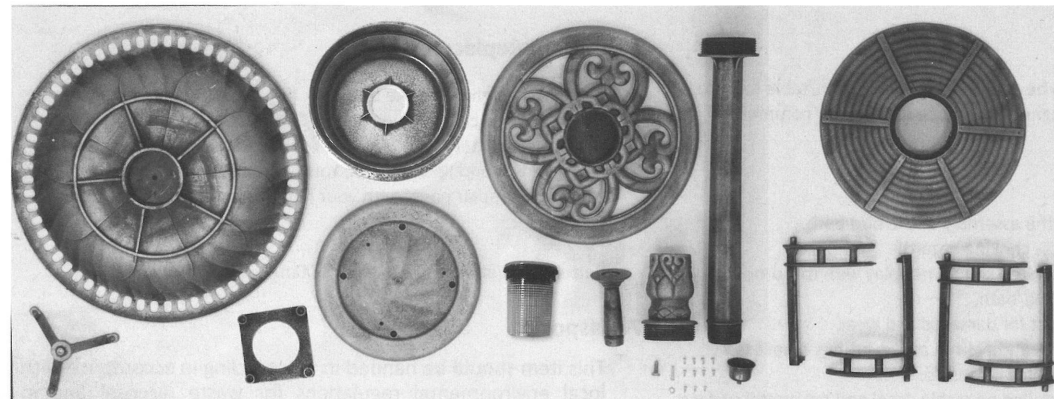


Parts

Ensure that all the parts listed below are enclosed. If parts are missing, please contact your retailer. This product requires more than one person to assemble. Please ensure that the unit is secure before use.



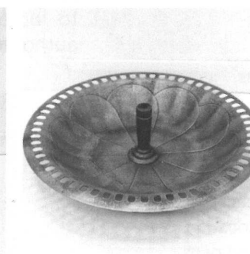
STEP 1
Place the base on a flat/level surface and screw the lower stem into place.



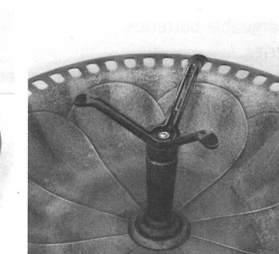
STEP 2
Place the growing trough into place.



STEP 3
Screw the upper stem through the growing trough into the lower stem.



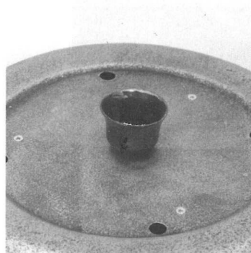
STEP 4
Attach the table support to the bath bowl with the bolt. Screw to lower stem.



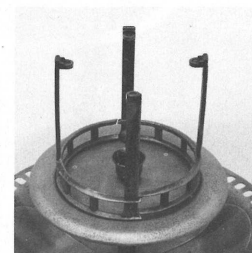
STEP 5
Attach the table support using the large screw and metal washer



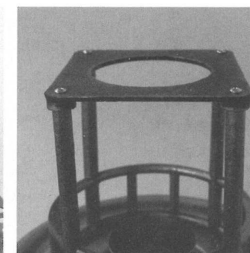
STEP 6
Place the table platform and secure using 3 small screws.



STEP 7
Push the decorative bowl into the center of the table platform.



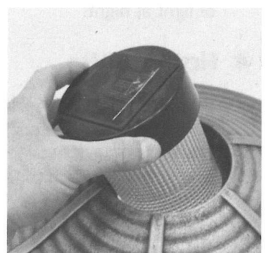
STEP 8
Fix the canopy supports into place with 4 small screws.



STEP 9
Secure the canopy frame into place using 4 small screws.



STEP 10
Gently clip the canopy into place on the canopy frame. A small click should be heard once secure. **DO NOT APPLY TO MUCH PRESSURE.**



STEP 11
Finally insert the Solar Powered lantern into place. Ensure that the light is active by turning the switch to on. This is located under the lid.