

bond it

BITUBOND

With over 20 years experience of manufacturing for the roofing industry, Bond It today manufacture and supply the Bitubond range of liquid roof coatings and compounds.

Developed to meet the needs of the professional builder, specialist roofing contractor and DIY enthusiasts, the Bitubond range is a comprehensive selection of preparatory, waterproofing and solar protective products, which when used together as a system, will provide high quality, long lasting waterproofing protection.

Using the appropriate product mix we offer solutions for roofing projects that will achieve a successful refurbishment and prolong the life expectancy of a roof. We also produce a number of ancillary products which compliment the easy to use coating solutions.

Technical and safety data sheets are available on all of our products at www.bonditgroup.com and include full application details.

In this overview and guide we'll take you through the following applications and the associated products from our range:

Prepare & Prime: Bitumen Primer, Trowel Mastic

Waterproofing: Sealacryl, All Weather Roofing Compound, Rubber Bitumen Emulsion

Solar Protection: Aluminium Solar Reflective Paint, Chipping Solution

Ancillary Products: Flashing Tape, Felt Adhesive, Bitumen Paint, DPC, Roof-Mate Sealant, Rain-Mate Sealant, Flash-Mate Sealant.

SCAN THE QR AND GET OUR APP!

View images and data on your phone and get all the information you need on any Bond It product.



FLASHING TAPE

- Replaces lead flashing
- High performance, waterproof and self adhesive
- Ideal for roofs, porches, parapets, chimney stacks, skylights, guttering, down pipes etc

600mm x 10M

bond it
WEATHERPROOFING

SealAcryl

ONE COAT EMERGENCY REPAIR & WATERPROOFER FOR ROOFS

- Instant waterproofing protection
- Application in damp weather
- Fibre reinforced
- Fully flexible
- Excellent solar reflectivity

5kg

COLOUR AS BARCODE

bond it
BITUBOND RANGE

ROWEL

ROOF & GUTTER

FLASH-MATE

LEAD SEALANT

A cold application bonding of

ROOF-MATE

BITUMEN PRIMER

Weatherproof
Permanently Flexible
External Use
Waterproof

2.5L

PREPARE & PRIME THE BASICS

Clean: Always clean surfaces thoroughly as this may affect the adhesion bond and impair performance. Brush away all dust, dirt, rust or loose particles. If any organic growth such as moss or lichen, treat with Bond It Mould Stop or Organic Cleaner. (Refer to appropriate data sheet when using these products). On bare metal a rust inhibiting product, such as red oxide or zinc phosphate should be applied and allowed to harden.

Prime: Where required, prime the substrate to improve adhesion of waterproofing coating to surface. Apply a thin, even coat and allow to dry. Highly porous surfaces will reduce the coverage of the primer and if the surface is old or weathered a second coat may be necessary. Bitumen Paint may bleed through any paints subsequently applied over it therefore we suggest applying a primer recommended by the paint manufacturer before over painting.

Patch Repair: Conventional roof coatings will not seal badly damaged or degraded areas, so any cracks, holes or joints on the surface should be sealed and filled with Trowel Mastic. Large holes can be treated by embedding a patch of bitumised glass fibre scrim in Trowel Mastic, then applying a second coat.

BITUMINOUS PRIMER A highly penetrative, low viscosity, bituminous solution for use on friable surfaces prior to application of bituminous materials, mastics and flashing tapes.

Uses: For priming concrete roofs and floors, cementitious screeds/renders, bitumen felt, mastic asphalt, weathered corrugated iron and steel. Exterior use.

Application: Clean surfaces thoroughly. Apply by brush or roller. Using a brush, scrub the primer into the surface. Ensure that only a thin coat is applied and that there is no pooling. Priming should extend at least 75mm beyond the area to be waterproofed. Leave to dry for 2-3 hours before continuing with further work. With fibre cement or dry rag based bituminous felts, apply generously to saturate the surface.

Drying Time: Approximately 3-6 hours depending on drying conditions.

Coverage: 4-10m² per L per coat.

Code	Colour	Size	Barcode
BDB034	Black	1L	5060021363626
BDB019	Black	2.5L	5060021362360
BDB020	Black	5L	5060021362377
BDB029	Black	25L	5060021363602



Got the app?
scan me!

TROWEL MASTIC A heavily filled and fibrated, trowel grade bituminous compound that dries to a soft flexible black coating which remains soft and pliable for a long time after application.

Uses: For waterproofing, stopping, bedding, pointing and sealing. Can be applied to mastic asphalt, roofing felt, corrugated iron, cast iron, fibre cement, slates, lead, copper, zinc, concrete and timber. For exterior use.

Application: Clean surfaces thoroughly. If still dusty after cleaning, or covered with weathered bitumen, prime and allow to dry. Apply with a steel trowel or putty knife. Force the compound into the crack leaving slightly proud at the centre. For large cracks and holes apply the compound over the area to be treated and embed a closely woven glass fibre membrane into the compound to overlap the crack or hole by approximately 50mm. Allow to dry and then apply a second coat fully covering the reinforcing membrane.

Drying Time: Most of the solvent evaporates in 24 hours under average drying conditions, but the coating remains soft for many months. This product is not suitable for over-painting with anything other than Bitumen Paint.

Coverage: Approximately 2m² per L.

Code	Colour	Size	Barcode
BDB011	Black	1L	5060021362124
BDB012	Black	2.5L	5060021360892
BDB013	Black	5L	5060021362131



WATERPROOFING THE BASICS

Always make sure the correct waterproofing product has been selected. Water based emulsions can be applied to substrates that are slightly damp whereas generally solvent based solutions need a totally dry substrate. Avoid the use of emulsions if there is an imminent threat of rain or frost, in these circumstances using All Weather Roofing Compound would be recommended as it becomes water resistant quickly after application.

Most installations will require two coats, with the second coat being applied at right angles to the first. These coats should not be applied too thickly and care should be taken not to allow the coating to collect at the bottom of corrugated gullies as this may result in blistering when it has fully cured. Waterproofing should extend up any adjoining vertical surface to approximately 200mm (8 inches). Always ensure that the roof/wall angle has a continuous coating applied. To overpaint bitumen based products, a suitable primer must be applied first to stop bitumen bleeding through to the surface.

SEALACRYL A one component, fibre reinforced co-polymer solvent based compound.

Uses: Prevents the ingress of water whilst allowing any trapped moisture to escape and evaporate naturally. For renovation of all types of roof. Provides waterproof protection of: flat and pitched roofs, corrugated asbestos, roof lights, flashings, roofing felt, gutters, gulleys, vents, edge detail, slate, asphalt, lead, glasshouses, metal and fibreglass; and will also bridge small gaps and cracks. For exterior use.

Application: Two steps to a waterproof roof. 1. Clean the area to be treated. 2. Apply straight from the tin using either a brush or roller. Treat all details first, in areas where excessive movement may occur additional reinforcement can be incorporated into the coating. Sealacryl can be applied in one coat, but experience has shown that a two coat application ensures a greater uniformity of coating thickness. Do not thin. Offers instant protection.

Drying Time: Normally 24 hours dependant on coat thickness, ambient temperature and ventilation.

Coverage: Coverage is approximately 1m² per 1-2kg.

Features & Benefits: Brush straight from the tin • Withstands ponding • Excellent adhesion – no primer required in most instances • Application in damp weather • Instant waterproofing protection • Superb solar reflectivity • Reinforced membrane – fully flexible • One coat seamless application • UV stable - Unaffected by temperature • Economical – labour & time saving.

Code	Colour	Size	Barcode
SA1GR	Grey	1kg	5060021366078
SA2P5GR	Grey	2.5Kg	5056437401083
SA5GR	Grey	5kg	5060021366061
SA20GR	Grey	20kg	5060021368348
SA1WH	White	1kg	5056437400338
SA5WH	White	5kg	5060021368461
SA20WH	White	20kg	5060021368485
SA1BL	Black	1kg	5056437400321
SA5BL	Black	5kg	5060021368454
SA20BL	Black	20kg	5060021368478



ALL WEATHER ROOFING COMPOUND A solvent-borne, bituminous, heavy brush compound of a high build consistency containing a small percentage of fibrous filler. For year round application, it has excellent resistance to extremes of temperature, and will not crack in the cold or flow in the sun. Dries to a tough, black coating.

Uses: A general purpose, fibre reinforced waterproof coating for all common roofing surfaces, including mastic asphalt, roofing felt, corrugated iron, fibre/cement, slates, lead, copper, tin and zinc. Recommended for use where threat of rain precludes the use of an emulsion. For exterior use.

Application: Clean surfaces thoroughly and ensure substrate is completely dry. Stir thoroughly. Apply by brush or broom, with each coat at right angles to the previous one, at a maximum rate of 0.75 litres per m². Allow each coat to dry thoroughly (24 hours). Where necessary (ie. expansion/ contraction areas) reinforce with either an open woven glass fibre membrane or an open mesh polyester membrane. In order to prolong the effective life of the dried coating, it is recommended that it can be overcoated with Bitubond Solar Reflective Coating but leave for at least 10 days before applying the reflective coating.

Drying Time: Approximately 24 hours under average conditions.

Coverage: Approximately 1-2m² per L.

Code	Colour	Size	Barcode
BDB026	Black	2.5L	5060021360953
BDB027	Black	5L	5060021360960
BDB028	Black	25L	5060021360977



RUBBER BITUMEN EMULSION A solvent-free, rubberised bitumen emulsion which dries to a tough, black coating providing an effective cold-applied, damp proof membrane in sandwich constructions.

Uses: Ideal as a waterproofer for floors, walls and other above ground constructions, it also acts as a curing membrane when applied to green concrete. It is equally effective as an adhesive for wood blocks, wood mosaic panels, insulation boards, etc. Excellent insulator providing a barrier against vapour loss; resistant to extreme heat and cold. For interior and exterior use.

Application: All phases of the installation should comply with BS 8102 Code Of Practice - for protection for buildings against water from the ground. Prime substrate if required. Stir thoroughly. Refer to Technical Data Sheet for specific application details.

Coverage: Approximately 0.4-0.6 litres per m².

Code	Colour	Size	Barcode
BDB008	Black	2.5L	5060021360861
BDB009	Black	5L	5060021360878
BDB010	Black	25L	5060021360885



SOLAR PROTECTION THE BASICS

Prolonged exposure to direct sunlight can have a detrimental effect on roofing materials, for example a hot day will cause materials to expand, and then the cooler conditions in the evening cause them to contract again. This is a natural process, but over a period of time this continual expansion and contraction can significantly weaken areas of the roof covering and can even lead to material breakdown.

Bitumen, being black and so highly absorbent of the sun's rays, is particularly prone to this kind of hazard, so it is common practice to use a layer of solar reflective paint over a finished bitumen roof surface thereby lessening the effects of exposure to daylight and heat.

ALUMINIUM SOLAR REFLECTIVE PAINT A thin, bituminous based aluminium protective coating of brushing consistency that dries to a silvery finish.

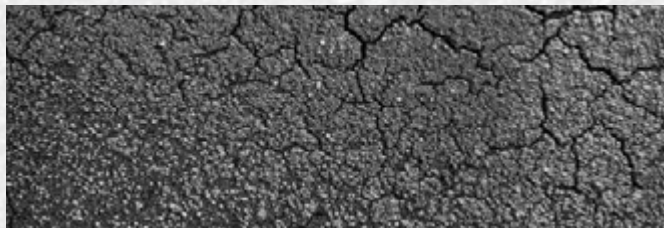
Uses: A light/heat reflective coating that will provide protection against solar degradation and heat gain when applied over bituminous coatings, aged asphalt and primed steel. A superior alternative to chippings. For exterior use.

Application: Clean surfaces thoroughly. If the surface is still dusty after cleaning, or covered with weathered bitumen, prime first allow to dry. Stir thoroughly and do not thin. Apply by brush or mohair roller Apply 2 coats, the second coat being applied as soon as the first coat is dry and at right angles to the first.

Drying Time: Refer to data sheet. Approximately 1 hour depending on temperature, humidity, air and base conditions.

Coverage: approximately 4-6m² per L. Two coats are recommended.

Code	Colour	Size	Barcode
BDB030	Silver	2.5L	5060021367914
BDB021	Silver	5L	5060021362117
BDB022	Silver	25L	5060021362384



CHIPPING SOLUTION A ready-to-use, premium grade, cold applied bitumen solution for bonding chippings to roofs which are flat or have a low pitch (up to 10°).

Uses: This product has immediate resistance to rainfall and provides protection from sunlight. Can be used with chippings such as flint, gravel, limestone, granite and white calcined spar. Provides a completely weatherproof finish. For exterior use.

Application: Clean surfaces thoroughly. Any blisters in existing felt should be split, rebonded and sealed. Any cracks or splits should be made good using Trowel Mastic. Apply by brush or squeegee and scatter chippings immediately. Where possible lightly roll the chippings and brush off any excess after the adhesive has set (1-4 days, depending on the weather).

Drying Time: will vary depending on weather conditions and film refer to data sheet.

Coverage: Approximately 1.8m² per L for 3-9mm chippings, 1.3m² per L for 12mm chippings.

Code	Colour	Size	Barcode
BDB023	Black	5L	5060021362674
BDB024	Black	25L	5060021362698



ANCILLARY PRODUCTS

These are the support products which complete the system. Paints, adhesives, tapes and sealants which are used to prepare, mend, maintain and add that finishing touch to your job.

BITUMEN PAINT A solvent-borne, bituminous black paint. When dry it forms an odourless and taint-free bitumen film. Reduces corrosion and decay and waterproofs and weather proofs steelwork and concrete.

Uses: For the protection of ferrous and non-ferrous metals, concrete, roofing felt, fibre/cement, corrugated iron, asphalt and wood, against water. For exterior use.

Application: Clean surfaces thoroughly. Surfaces to be treated must be completely free of water before application. Do not thin. Primer will only be required on corroded substrates. Apply at least two coats by brush, roller or spray allowing each coat to dry before applying the next coat.

Drying Time: Approximately 6 hours depending on drying conditions.

Coverage: Approximately 4-10m² per L.

Code	Colour	Size	Barcode
BDB015	Black	1L	5060021360908
BDB016	Black	2.5L	5060021360915
BDB017	Black	5L	5060021360922
BDB018	Black	25L	5060021360939



FELT ADHESIVE A solvent-borne, heavy duty adhesive.

Uses: A cold applied adhesive for bonding all types of bituminous roofing felts to asphalt, felt, metal, wood and concrete. It can also be used for bonding mineral chippings to bituminous surfaces. It provides a firm but flexible bond between 5oC and 50oC which hardens and softens with changes of temperature. Product can be thinned with 10% white spirit and be used as a priming coat or gritting solution. Not to be used over tar-based products.

Application: Clean surfaces thoroughly. Prime any dusty or porous surfaces first. Where possible, felt to be laid should be cut to size and positioned for 24 hours to assist application. Apply using a mop, squeegee or stiff brush. Allow the adhesive to become tacky to touch (typically 15 minutes to 1 hour) then place the roofing felt into position. The felt should be lapped: side laps minimum 75mm and end laps minimum 150mm, and the laps sealed with adhesive. For external use. Refer to data sheet for full application details.

Drying Time: Will vary depending on weather conditions and time allowed for adhesive to develop a tack. 24 to 48 hours is typical.

Coverage: When used as a roofing felt/lap adhesive: approx. 2 m² per L. When used as a gritting solution: 1.6m² per L using 3mm chips and 1.3m² per L using 10mm chips.

Code	Colour	Size	Barcode
BDB000	Black	1L	5060021367891
BDB001	Black	2.5L	5060021360823
BDB002	Black	5L	5060021360830
BDB003	Black	25L	5060021360847



FLASHING TAPE A crease-resistant lead coloured flashing tape for general repairs and sealing. It has an aluminium/polyester laminate facing with a high grade bitumen backing.

Uses: For general repairs and sealing. Designed for use as flashing on flat and pitched roofs, on parapets and chimney stacks. Ideal for sealing around RSJs, flues, concrete columns, roof lights, guttering and extractor vents. The strength of the facing gives resistance to puncturing and tearing and the bitumen gives flexibility and adhesion without the problems of slump.

Application: Clean surfaces thoroughly. Rough or porous surfaces should be primed and allowed to dry before application. 3M size pack contains a tin of primer for this purpose. Supplied in rolls for fast and clean application and conforms readily to awkward contours, providing excellent weather protection. Cut to required length, remove release paper and smooth down the bitumen backing onto the prepared surface. Seal edges by rolling down with a trowel or roller.

Code	Colour	Size	Barcode
BDF001	Grey	10M x 50mm	5060021360984
BDF002	Grey	10M x 75mm	5060021360991
BDF003	Grey	10M x 100mm	5060021361004
BDF004	Grey	10M x 150mm	5060021361011
BDF005	Grey	10M x 225mm	5060021361028
BDF006	Grey	10M x 300mm	5060021361035
BDF007	Grey	10M x 450mm	5060021367648
BDF008	Grey	10M x 600mm	5060021367655
BDF009	Grey	3M x 100mm	5060021361738
BDF010	Grey	3M x 150mm	5060021361745
BDF011	Grey	3M x 225mm	5060021361752



DAMP PROOF COURSE A damp proof membrane conforming to EN14909 and BS6515 suitable for domestic construction. Embossed to assist mortar adhesion. This product has been proven in performance over many years and remains flexible even at low temperatures.

Uses: Suitable for use all year round, a highly versatile product and is subject to stringent quality controls, conforms to the requirements of EN14909.

Application: Installation should be according to the code of practice CP102:1973 and normal DPC good practice procedures set in BS 5628 should be followed. Safe and clean to handle. Refer to data sheet for full application details.

Code	Colour	Size	Barcode
DPC100	Black	30M x 100mm	5060021367983
DPC112	Black	30M x 112mm	5060021367990
DPC150	Black	30M x 150mm	5060021368003
DPC225	Black	30M x 225mm	5060021368010
DPC300	Black	30M x 300mm	5060021368027
DPC450	Black	30M x 450mm	5060021368041
DPC600	Black	30M x 600mm	5060021368058



ROOF-MATE: ROOF AND GUTTER SEALANT

A polymerically reinforced lap jointing sealant and adhesive.

Uses: Suitable for repairing and maintaining general roofing, roof drainage systems and cracked downpipes, etc. Forms a flexible seal so is ideal to prevent leaks in gutters. Can be used on metal, construction grade plastics, paint, stone, timber, brick, bitumens and asphalt. For exterior use.

Application: Clean surfaces thoroughly. Loose materials and signs of corrosion must be removed prior to application. Apply using a standard sealant gun. Cut tip from cartridge and the nozzle at an angle of 45° and fix to cartridge. Using a caulking gun force the sealant into the joint. When a deep joint is being sealed a backing tape should be used. After application any high spots of material should be feathered smooth to prevent water build up. Once cured product maintains a permanently putty-like consistency.

Coverage: Approx 10M (6mm bead).

Code	Colour	Size	Barcode
BDGR	Black	EU3	5060021361608



RAIN-MATE: ALL WEATHER SEALANT

A water repellent, general purpose sealant, based on SBR rubber. It has excellent adhesion to all surfaces, even when damp, it is permanently flexible, UV resistant, paintable sealant that will not crack or slump.

Uses: Suitable for use on brick, concrete, stone, all metals, painted or bare wood, glass, vinyl and most plastics. It is also compatible with bitumen and asphalt for roof repairs in damp conditions. It is ideal for sealing doors, windows, roofs, cladding and vehicle bodies. For exterior use.

Application: Clean surfaces thoroughly. Primers are not usually required. Rust, etc, should be removed to give as sound a surface as possible. For application in damp conditions remove any standing water and residual dirt and dry the surface as well as possible with cloths or paper towels before applying sealant. Apply the sealant in a normal fashion ensuring there is sufficient sealant present to accommodate any future joint movement (25% of sealant width). Allow 24 hours before painting.

Coverage: Approx 10M (6mm bead).

Code	Colour	Size	Barcode
BDAWSBL	Black	EU3	5060021362612
BDAWSCL	Clear	EU3	5060021360502
BDAWSWH	White	EU3	5060021362629



FLASH-MATE: LEAD SEALANT

A low modulus neutral cure fast-skinning, roof sealant which reduces weather ingress, tile lift and noise. Tough, resilient and compatible with lead, galvanised steel and all metals. Excellent UV, heat and ozone resistance and sets to a tough, resilient rubber seal. Conforms to EN15651-1, 2 F EXT-INT, G.

Uses: Will bond glass and glazing plastics (including polycarbonate) as well as small sections of roofing materials under repair. Ideal for sealing roof lights, conservatories, soffits, glass houses, industrial roofing systems and lead flashings. Also suitable for use on metals, concrete, brick, GRP, mortar and plaster, sealed timber; acrylics; PVCu and all painted surfaces. For exterior use.

Application: Clean surfaces thoroughly. Priming may be necessary on porous surfaces. Cut tip from cartridge and the nozzle at an angle of 45° and fix to cartridge. Using a caulking gun apply the sealant into the joint. Best tooling is achieved if a minute or two is allowed after application before smoothing. For bonding press the two surfaces together before skinning commences. On very hot roofs skinning time will be much shorter. Once the silicone has been applied and tooled rain will not have any adverse effects on the sealant.

Coverage: Approx 10M (6mm bead).

Code	Colour	Size	Barcode
BDLEAD	Grey	EU3	5060021363466

